

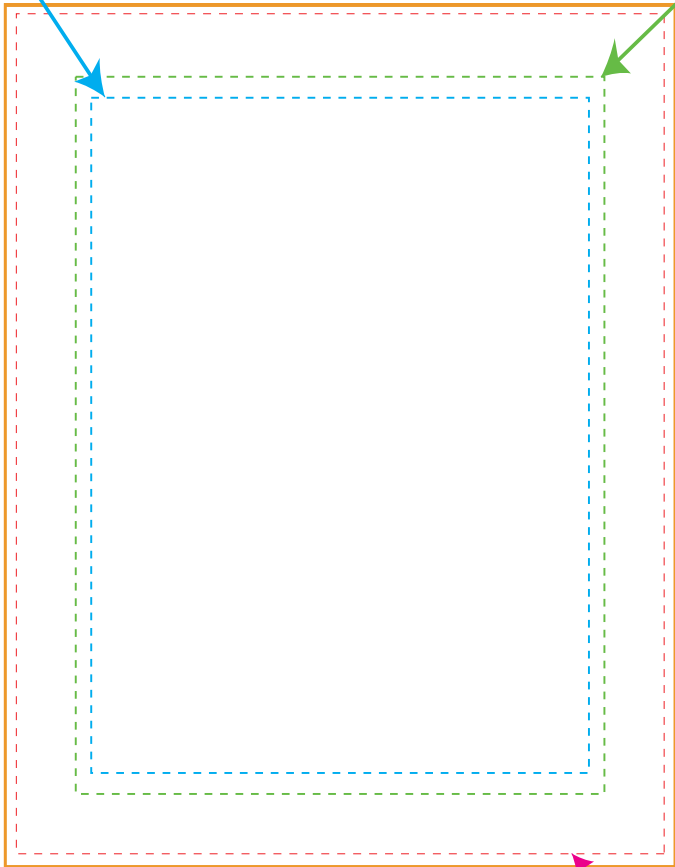
Inner blue line

Image area:
Critical art
should be
within
this
area

Operator position line

Second Green line

Button Size:
all art and color
should bleed
past
this
line



**NEVER
SEND PDF
ART WITH
DIELINE UNLESS
YOUR SENDING
ILLUSTRATOR FILES &
DIELINE IS ON LAYER**

**Magenta
CUT LINE**

This line is where we
cut your button art should
bleed all the way to this line so
all color/art wraps around button